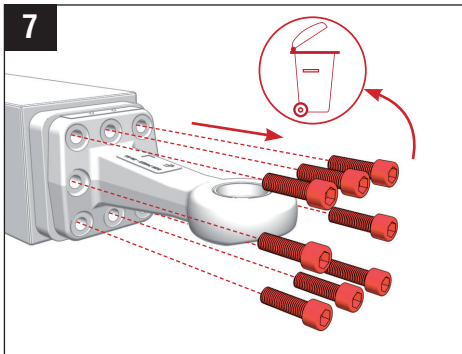
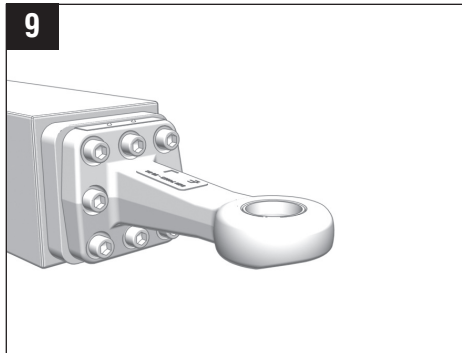




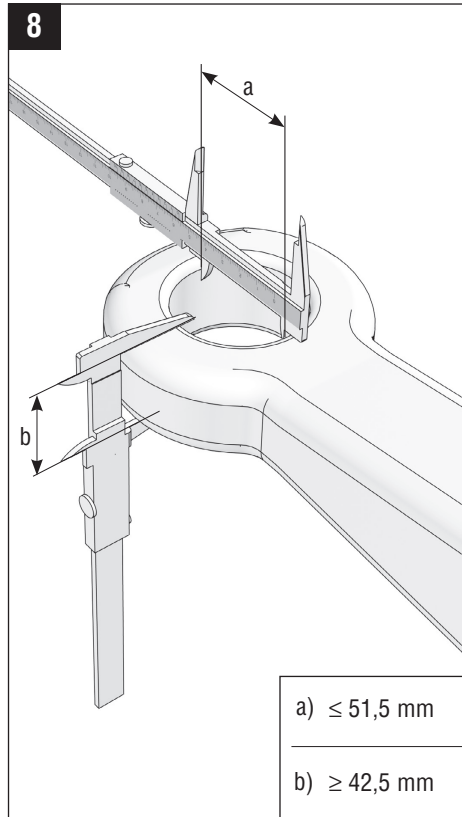
装配, 维护 | *Assembly, Maintenance*



拧下螺钉。  
*Remove the screws.*



组装拉杆孔眼。 | *Assembled drawbar eye.*



a)  $\leq 51,5$  mm

b)  $\geq 42,5$  mm

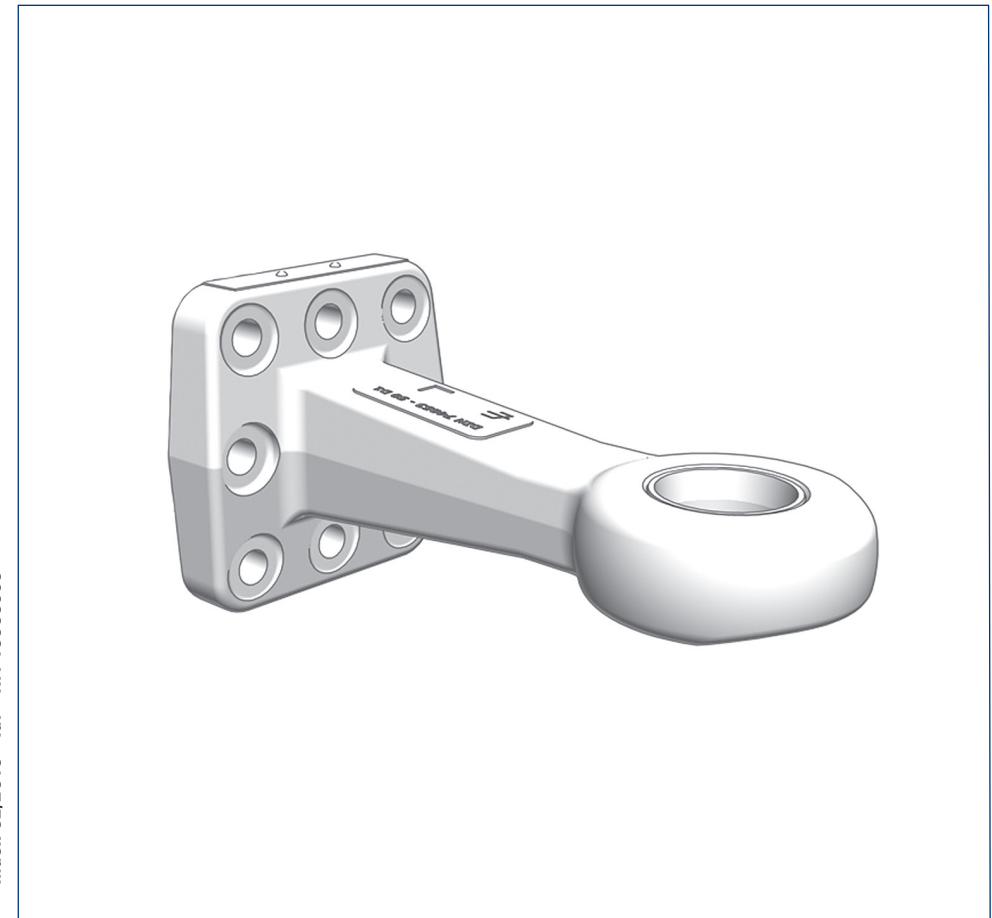


02/19

DE  
EN



拉杆孔眼 470 符合 D50-X 级 DIN 74053/ISO 1102  
*Drawbar eye 470 acc. to class D50-X DIN 74053/ISO 1102*



Index 02/2019 · Id. - Nr. 10090369



Produced in a certified company

VBG GROUP TRUCK EQUIPMENT GMBH · Girmesgath 5 · D-47803 Krefeld  
www.ringfeder.de · e-mail: zentrale@vbggroup.com

## 拉杆孔眼 470 符合 D50-X 级 · Drawbar eye 470 acc. to class D50-X

这些拉杆孔眼专门用于连接配有相应螺栓接头的车辆、卡车和拖车。

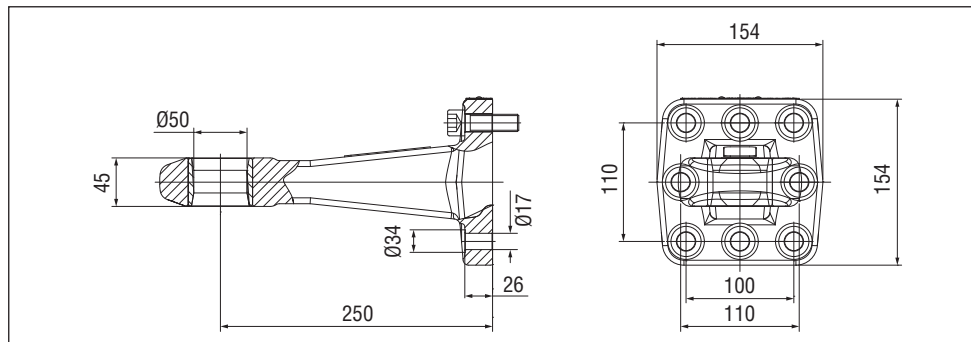
在安装（或更换）拉杆孔眼时，请始终遵守相关的法规和车辆制造商的特定信息。更换拉杆孔眼时，也必须更换交付的拉杆孔眼中的所有组成部件。在车辆上安装拉杆孔眼时，请务必按照ECE 55 R-01和94/20 EC指令的附录VII中的规定。安装和维护工作必须谨慎而专业地进行。

*These drawbar eyes are to be used exclusively to connect with vehicles, trucks and trailers equipped with the appropriate bolt couplings.*

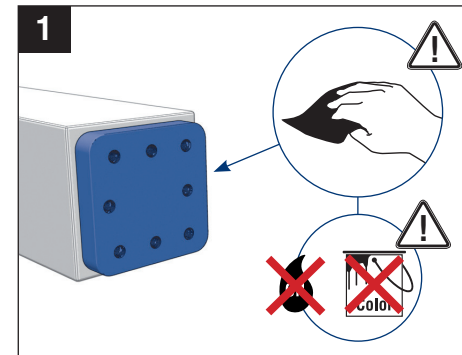
*When fitting (or replacing) the drawbar eyes, always attend to the relevant statutory regulations and particular information from the vehicle manufacturers. When replacing the drawbar eyes all component parts of the drawbar eyes comprised in the delivery have to be exchanged. Fitting of the drawbar eyes on the vehicle has to be made in compliance with the requirements laid down in appendix VII of the directive 94/20 EC and ECE 55 R-01, respectively. Installation and maintenance works have to be carried out carefully and professionally.*

## 技术数据 · Technical data

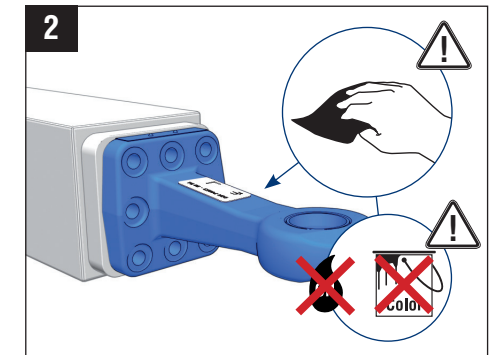
级别 Class	ECE 55-01	D 值 D-Value	Dc 值 Dc-Value	V 值 V-Value	认可的支撑负荷 Admiss. supporting load	螺栓规格 Specification screws
		kN	kN	kN	kg	8 ×
D 50-X	E1 55R-010800	190	135	75	1000	M16 x 50 ISO4762
D 50-X	E1 55R-010800	190	135	50	2500	级 · Grade 10.9



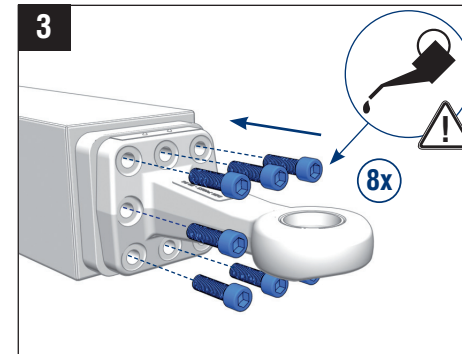
## 装配, 维护 | Assembly, Maintenance



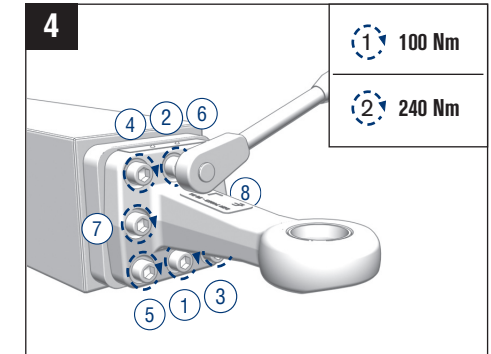
法兰去油、对齐和焊接。  
De-oil, align and weld flange.



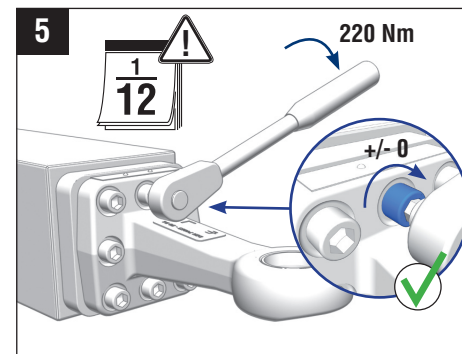
拉杆孔眼去油、清洁和放置。  
De-oil, clean and place eye.



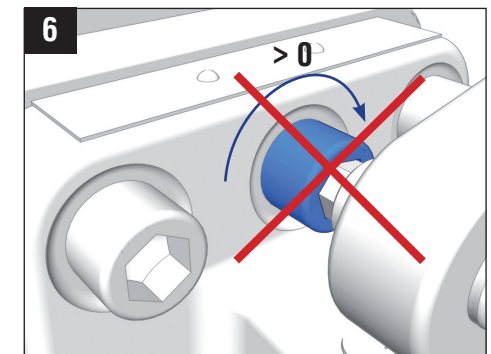
拧入螺钉。  
Screw in screws.



以交叉方式，从内到外拧紧螺钉2次。| Crossed screws, tighten from the inside out in 2 passes.



根据检查间隔检查螺钉连接。  
Check screw connection acc. to inspection interval.



密封压盖有间隙。  
Gland has game.